



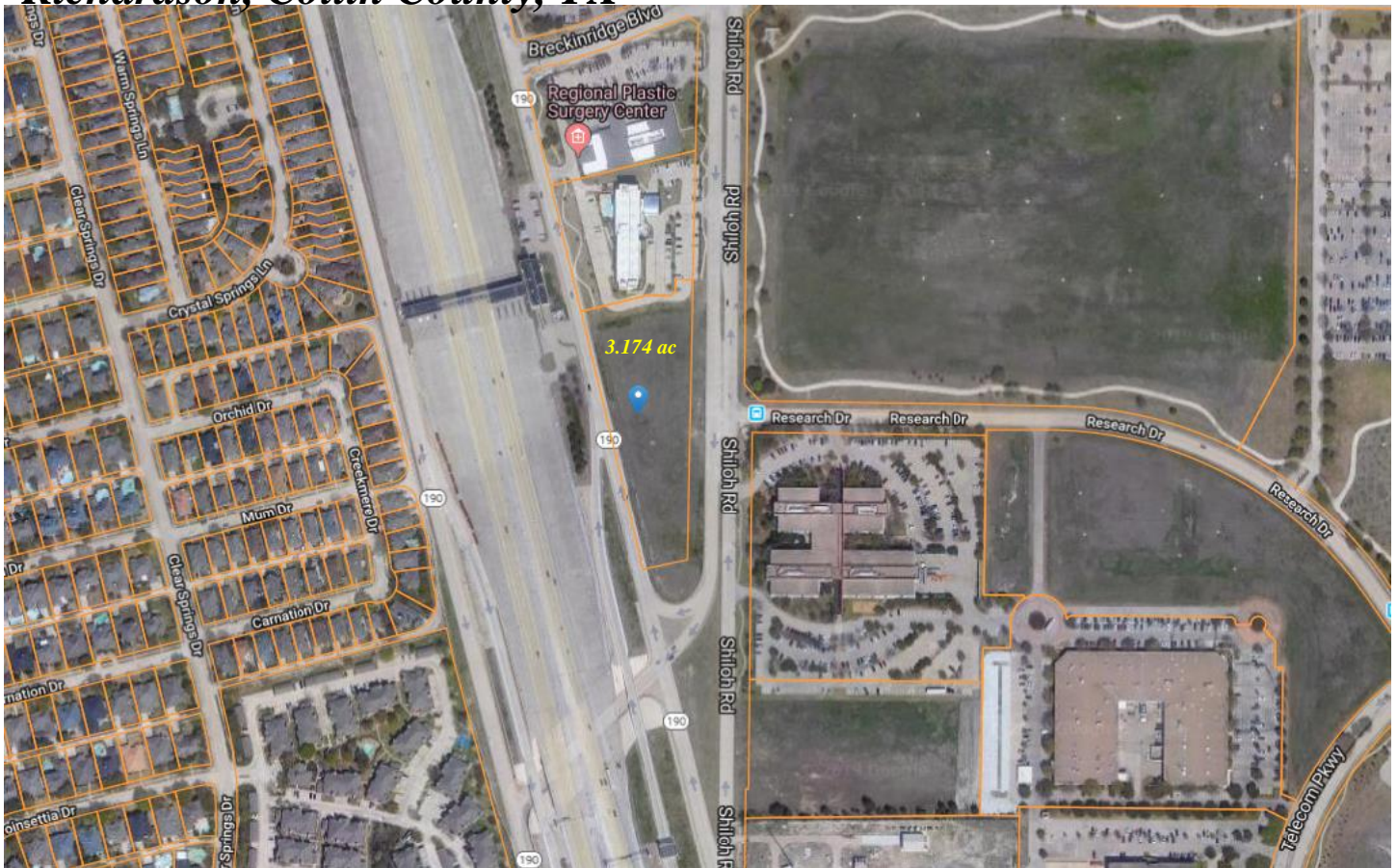
MARK V COMMERCIAL, INC.

3.174 ACRES

LAND FOR SALE

3261 EAST PRESIDENT GEORGE BUSH HIGHWAY

Richardson, Collin County, TX



FEATURES:

- *3.174 acres – 138,267sf**
- *Zoned - LR-(1) Richardson**
- *Excellent to build office building, medical center, high tech facility or retail center**
- *Excellent President George Bush Turnpike access**
- *Close to Shiloh Business Park –
Home of: Fujitsu Networks, Advocare,
Commscope, Rockwell -Collins,
Boeing, Methodist Health Care Hospital**

LOCATION:

**Located off of Shiloh Road and
President George Bush Turnpike in
Richardson, Collin County, TX**

**For Information, Contact:
MIKE MCCARTAN
JEFF WHITE
972-250-2550**

