



# **MARK V COMMERCIAL, INC.**

**3452 FOREST LANE- STE. 300  
DALLAS, TX 75234**

**\*FOR LEASE\*  
APPROX. 3,000 SF  
OFFICE SPACE**



## **BUILDING FEATURES:**

- \*Total Project Size: Approximately 5,200sf**
- \*Year Built- 2007**
- \*Available space: 3,000sf in Suite 300**
- \*Lot size: .95 acres**
- \*Brick masonry construction- one-story building**
- \*100% office space**
- \*20 parking spaces**
- \*Close proximity to LBJ Freeway & I-35/Stemmons Frwy**
- \*Sprinklered yard**
- \*Retail, restaurants, banks, and shopping close by**
- \*Monument and building signage available**

## **LOCATION:**

- \*Located just west of Marsh Lane  
along the south side of Forest Lane**

**For Information, Contact:  
MIKE MCCARTAN  
JEFF WHITE  
972-250-2550**

# ***3452 FOREST LANE FACT SHEET***

**LOCATION:**                    *3452 Forest Lane  
Suite 300  
Dallas, TX 75234*

**BUILDING SIZE:**            *5,200SF*

**VACANT SPACE:**            *Suite 300 – Approximately 3,000sf*

**LOT SIZE:**                    *.95 AC*

**LEGAL  
DESCRIPTION:**            *3452 FOREST LANE- OFFICE CONDOS- BLK 6445  
LT 1A.1 ACS 1.4630 BLDG 3 UNIT 300 CE% 25.9*

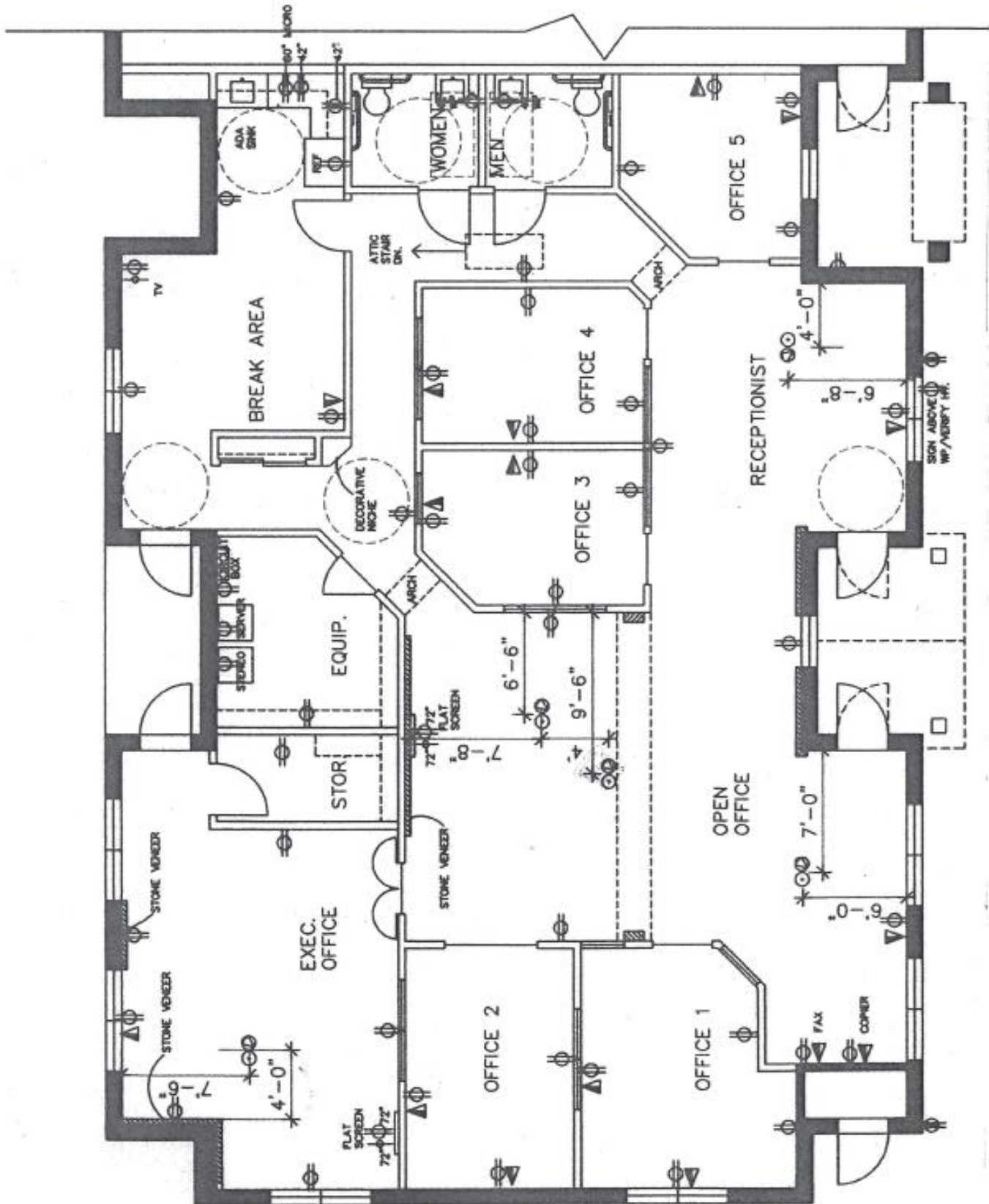
**USAGE:**                        *General Office*

**ASKING PRICE:**            *\$20.00/SF Gross Rents  
Net of electrical cost & janitorial expenses*

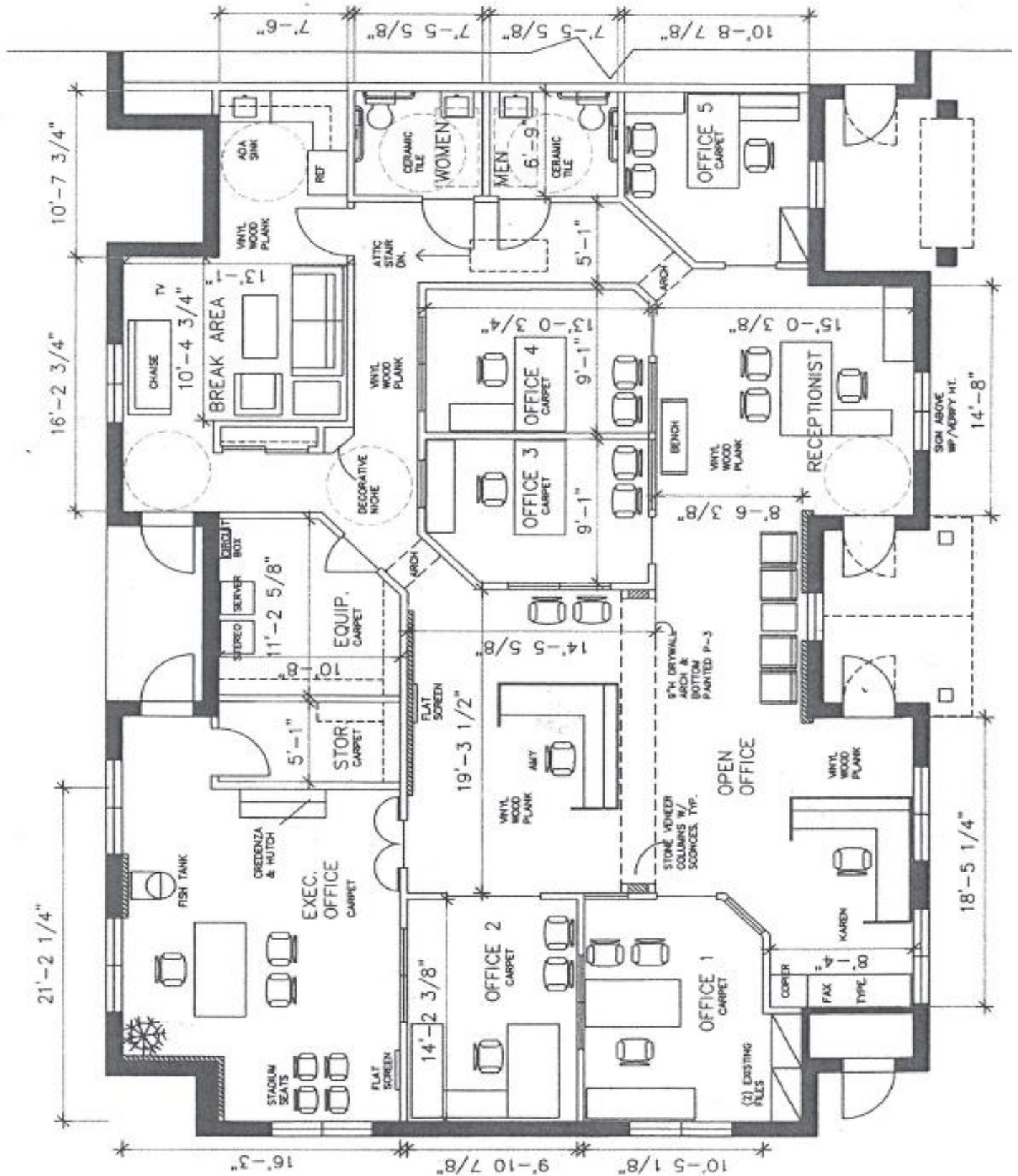


1320 VILLAGE CREEK DRIVE \* SUITE 200 \* PLANO, TX 75093 \* PHONE: 972-250-2550 \* FAX: 972-250-1015

3452 Forest Lane, Dallas, TX 75234  
 Space Plan  
 Approximately 3,000sf



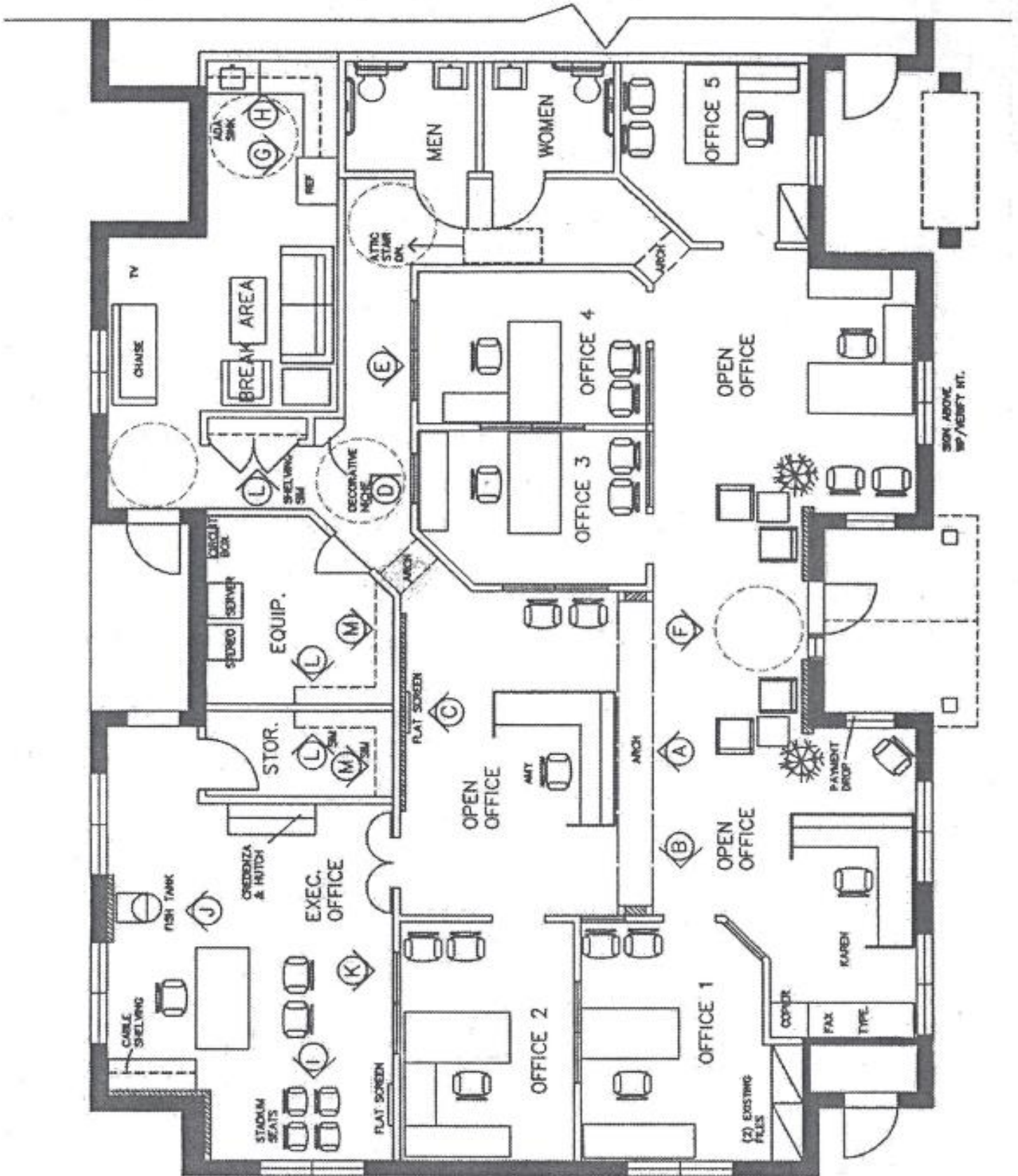
**3452 Forest Lane, Dallas, TX 75234**  
**Space Plan with Dimensions**  
**Approximately 3,000sf**



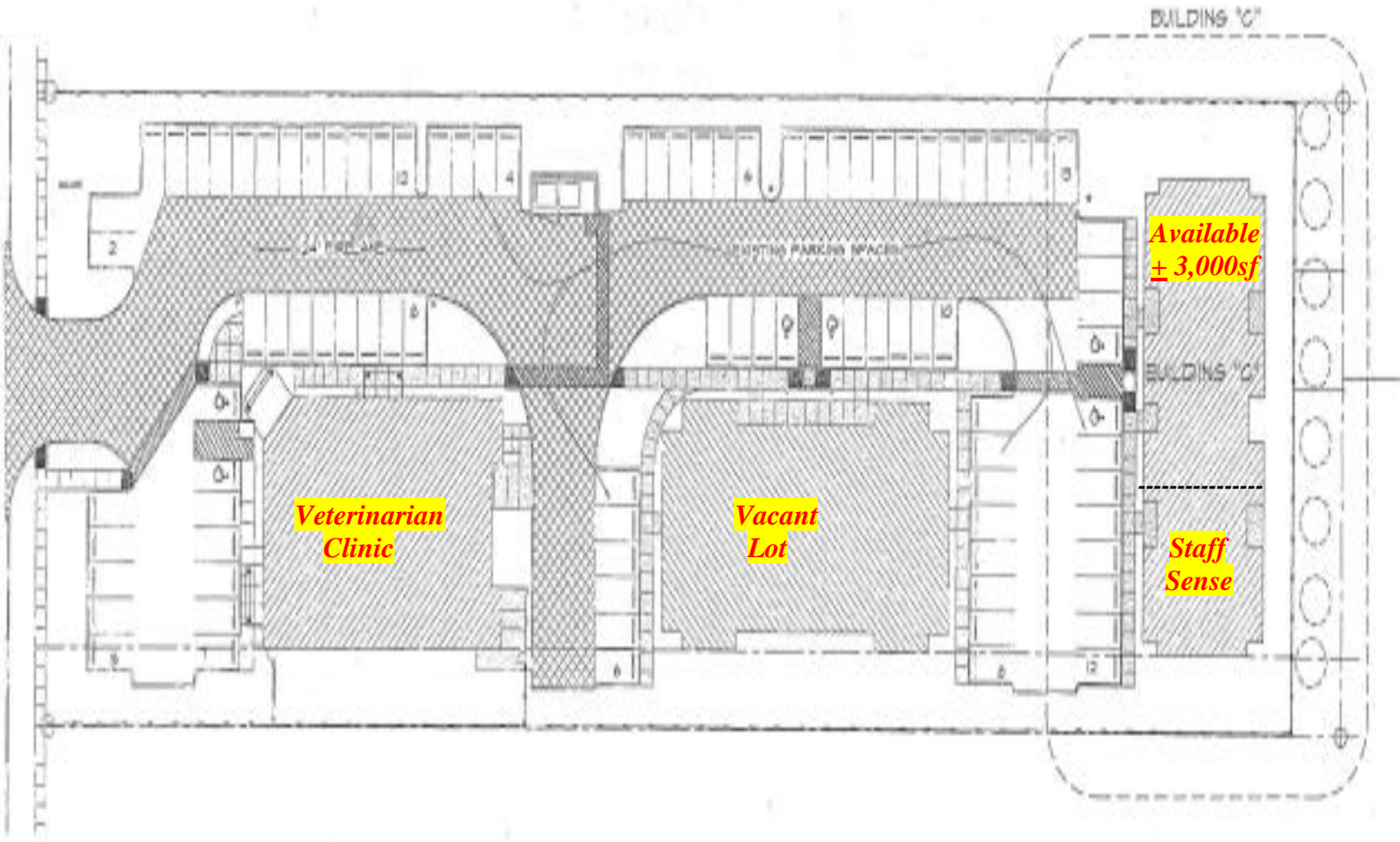
3452 Forest Lane, Dallas, TX 75234

Furniture Plan

Approximately 3,000sf



**3452 Forest Lane, Dallas, TX 75234**  
**Development Plan**  
**& Parking**



3452 Forest Lane, Dallas, TX 75234  
Building "C"  
Parking Site Plan

