



MARK V COMMERCIAL, INC.

**MCDERMOTT OFFICE PARK
40 EAST MCDERMOTT
ALLEN, TEXAS**

***FOR LEASE*
5,290 SF
OFFICE BUILDING**

Mapsco 559-H



ALLEN, COLLIN COUNTY, TEXAS

BUILDING FEATURES:

- *Total Project Size: 5 building complex
Approximately 27,000sf**
- *Year Built- 2006**
- *Available space: 5,290sf**
- *Approximately 20,125sf of land**
- *Stucco & stone construction one-story building**
- *100% office space**
- *20 parking spaces in Lot 3-mostly covered**
- *Close proximity to Highway 75, banks, restaurants,
and shopping**
- *Sprinklered yard**
- *Located by Allen Police Department**

LOCATION:

***Located just east of Central south of
McDermott east of the Police Station**

**For Information, Contact:
MIKE MCCARTAN
JEFF WHITE
972-250-2550**

40 EAST MCDERMOTT FACT SHEET

LOCATION: ***MCDERMOTT BUSINESS PARK
5 BUILDING COMPLEX
APPROXIMATELY 27,000 SF TOTAL***

BUILDING SIZE: ***5,290SF***

USAGE: ***General Office***

ASKING PRICE: ***\$22.00/SF Net***

20 East McDermott



40 East McDermott



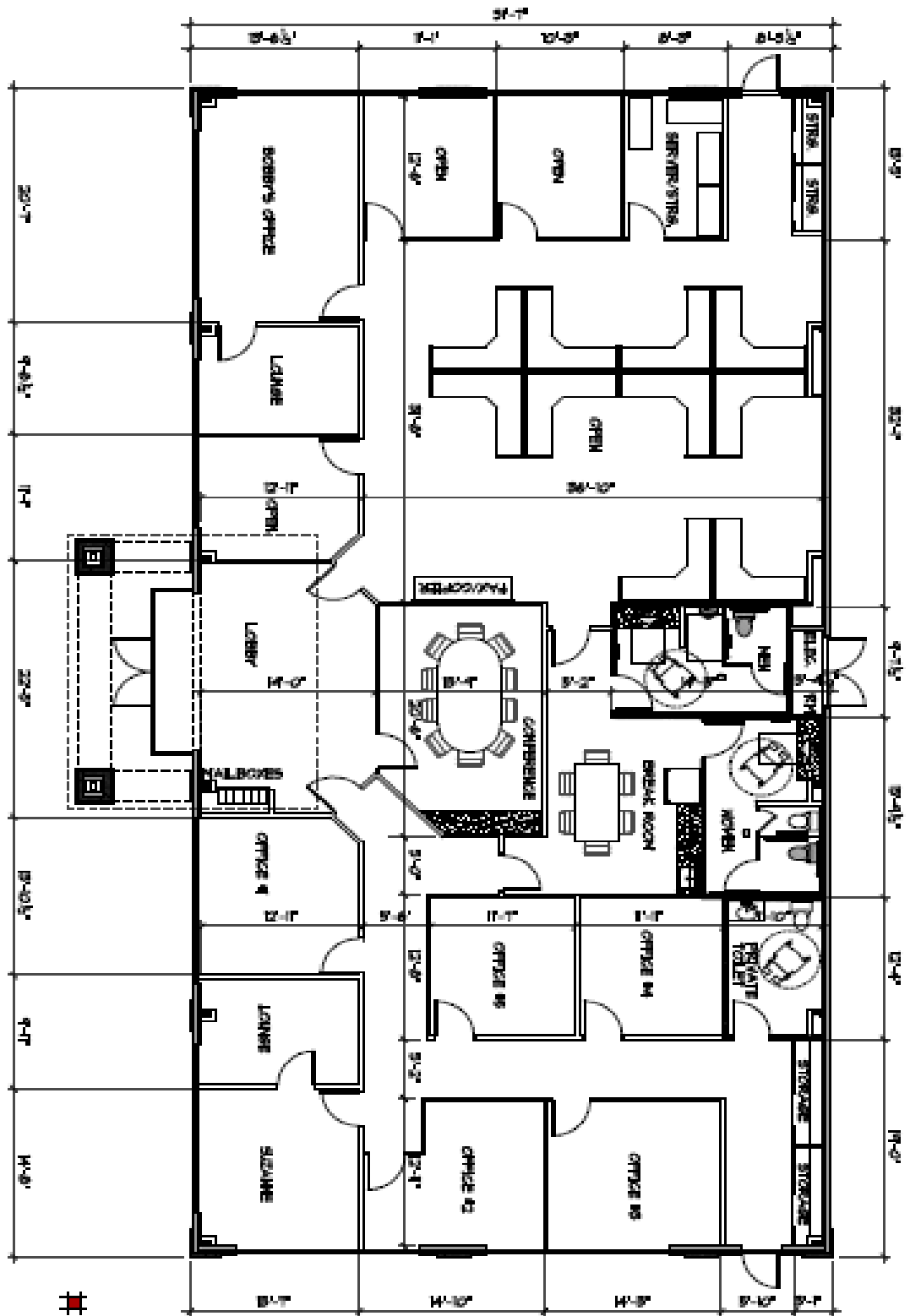
60 East McDermott





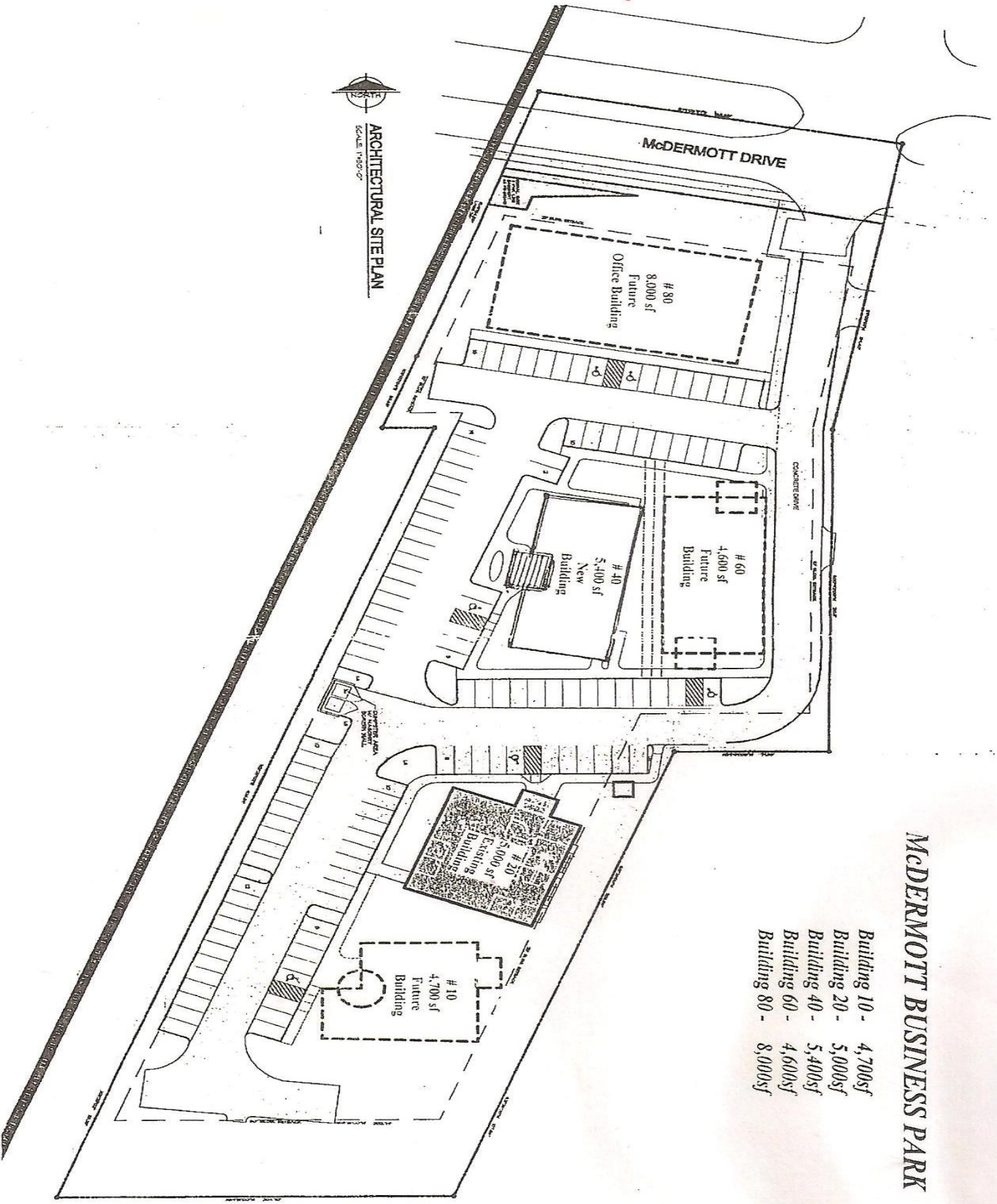
FLOOR PLAN

SCALE: 1/8"=1'-0"



WRIGHT GROUP
ARCHITECTS - PLANNING, P.L.L.C.

1110 S. ELM STREET
CARROLLTON, TEXAS
7 5 0 0 8
(9 7 2) 2 4 2 - 1 0 1 5





 ARCHITECTURAL SITE PLAN

 SCALE 1/8"=1'-0"

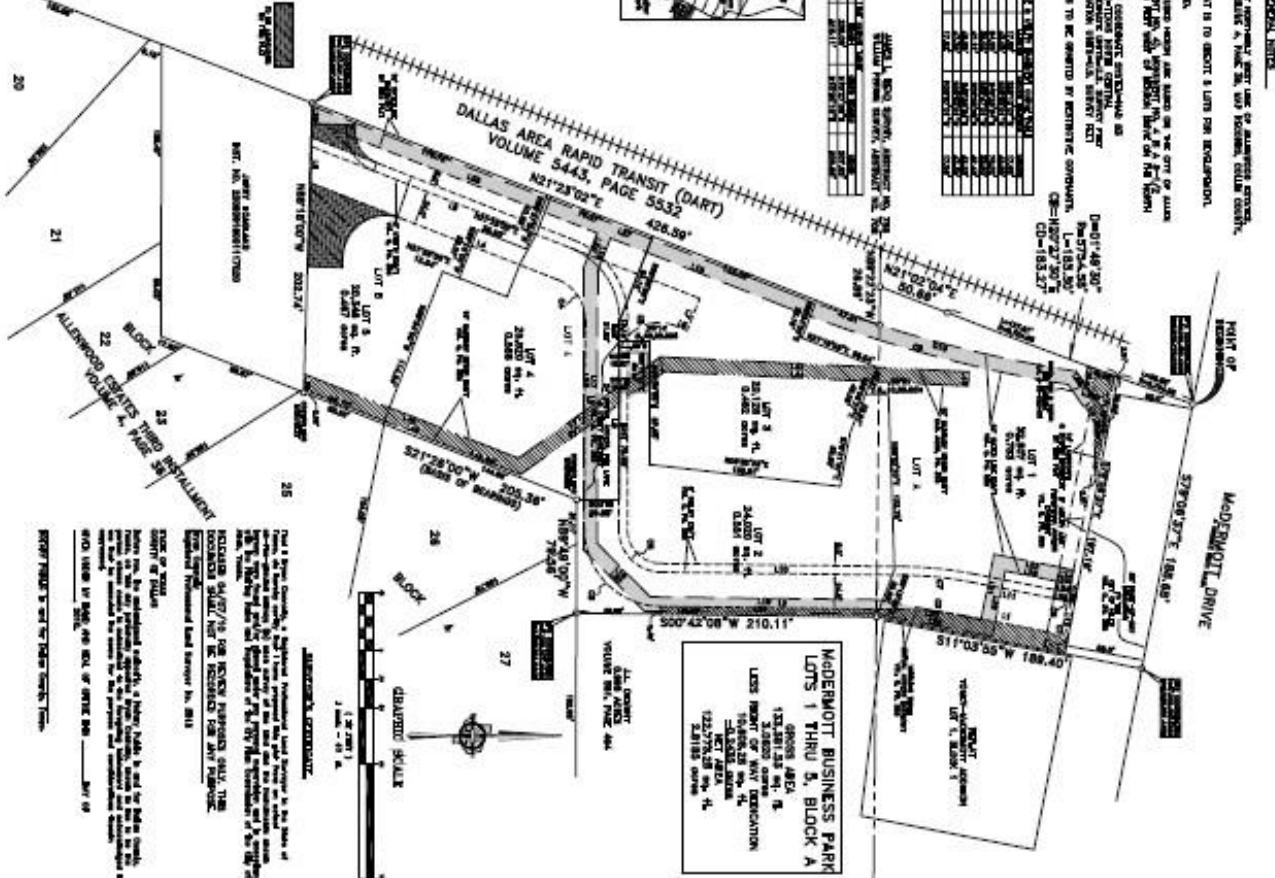
McDERMOTT BUSINESS PARK

- Building 10 - 4,700sf
- Building 20 - 5,000sf
- Building 40 - 5,400sf
- Building 60 - 4,600sf
- Building 80 - 8,000sf

SPECIAL NOTES

- 1. ALL LOTS TO BE BOUNDARY SURVEYED BY REGISTERED SURVEYOR...
2. THE NUMBER OF THE FINAL LOT IS TO BE SHOWN IN BLOCK AND ENCLASPED...
3. C = 1/2 INCH = 50 FEET...
4. THE STATE SHALL GUARANTEE THAT THE LOTS ARE BOUND BY THE CITY OF JACKSONVILLE...
5. NORTH-SOUTH LINE TO BE THE CENTER LINE OF THE...
6. THE DISTANCE BETWEEN THE CENTER LINE OF THE...
7. THE DISTANCE BETWEEN THE CENTER LINE OF THE...
8. THE DISTANCE BETWEEN THE CENTER LINE OF THE...

Table with 3 columns: LOT, AREA, and COMMENTS. Lists lots 1 through 14 with their respective areas and any special notes.



MADERBOTT BUSINESS PARK LOTS 1 THRU 14. LESS RESERVE OR ANY RESERVATION. ACCORDING TO THE RECORDS OF THE CITY OF JACKSONVILLE, FLORIDA. THE DISTANCE BETWEEN THE CENTER LINE OF THE...

REPORT CONTINUED

REPORT CONTINUED. THE CITY OF JACKSONVILLE, FLORIDA, HAS ADOPTED... THE CITY OF JACKSONVILLE, FLORIDA, HAS ADOPTED... THE CITY OF JACKSONVILLE, FLORIDA, HAS ADOPTED... THE CITY OF JACKSONVILLE, FLORIDA, HAS ADOPTED...

APPROVED: [Signature Area] CITY OF JACKSONVILLE, FLORIDA. THE DISTANCE BETWEEN THE CENTER LINE OF THE... THE DISTANCE BETWEEN THE CENTER LINE OF THE... THE DISTANCE BETWEEN THE CENTER LINE OF THE...

